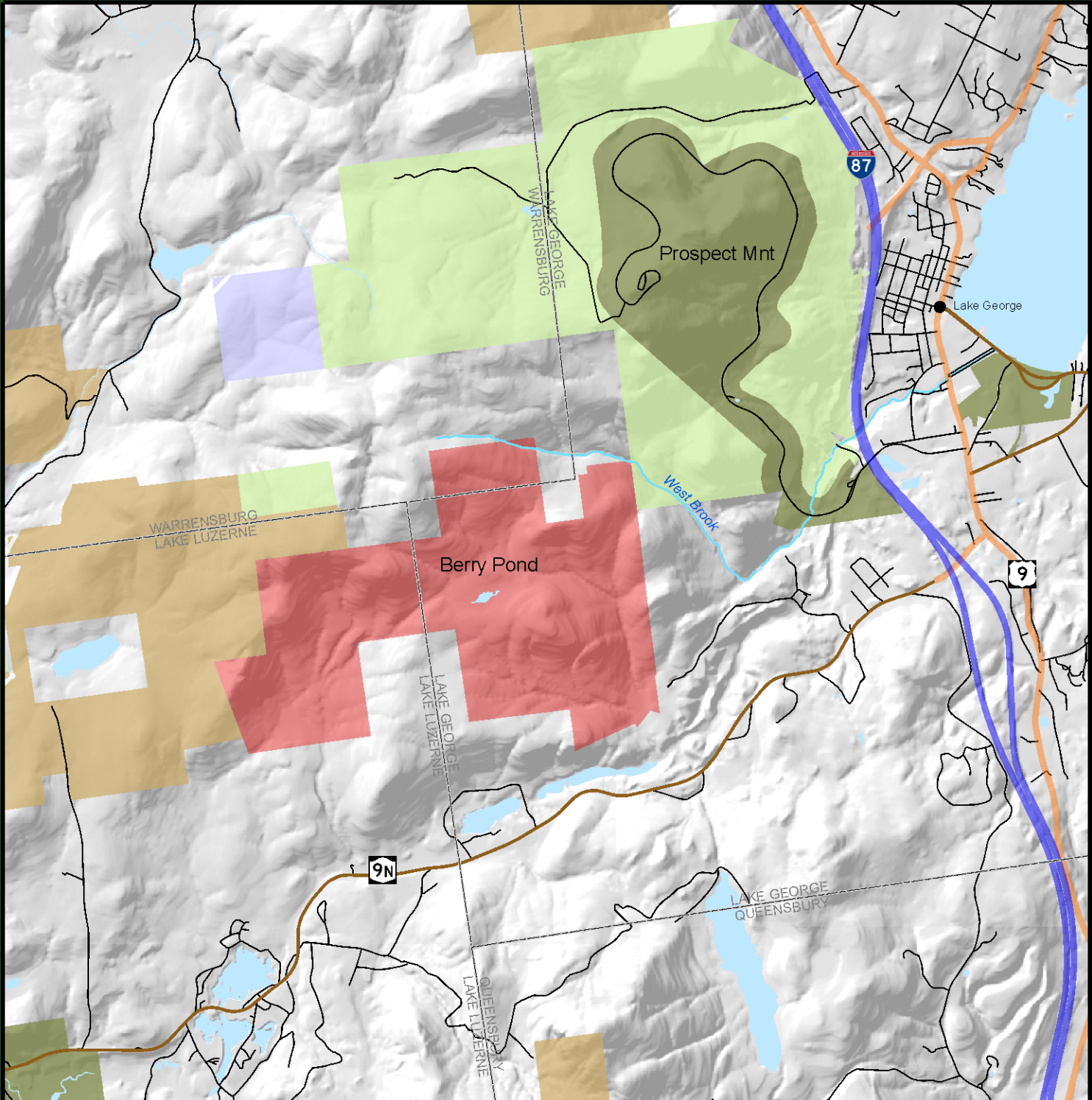




Department of Environmental Conservation

Berry Pond Land Acquisition

New York State Acquires 1,436 acres from the Lake George Land Conservancy



Legend

- | | |
|-----------------|-----------------------|
| Forest Preserve | Berry Pond |
| Wild Forest | Conservation Easement |
| Intensive Use | |
| Unclassified | |

